



## **Viadux, 42 Great Bridgewater Street, Manchester, M1 5LP**

**£530 Per Week**

THE VIADUX ON GREAT BRIDGEWATER STREET M1

13TH FLOOR

2 BEDROOM 2 BATHROOM APARTMENT

HOTEL STYLE AMENITIES INC: RESIDENTS POOL, GYM, SPA, LOUNGE, BAR, WORKSPACES, CINEMA & EVEN A KARAOKE ROOM!

FURNISHED

AVAILABLE FROM 24.07.2026

- THE VIADUX
- HOTEL STYLE FACILITIES INC POOL, GYM, CINEMA, CONCIERGE
- 13TH FLOOR
- ONE OF THE MOST LUXURIOUS BUILDINGS IN MANCHESTER
- 2 BEDROOMS
- DIRECT ACCESS TO METROLINK
- FURNISHED
- 2 BATHROOMS
- AVAILABLE FROM 24.07.2026
- STUDENTS OR PROFESSIONALS WELCOME

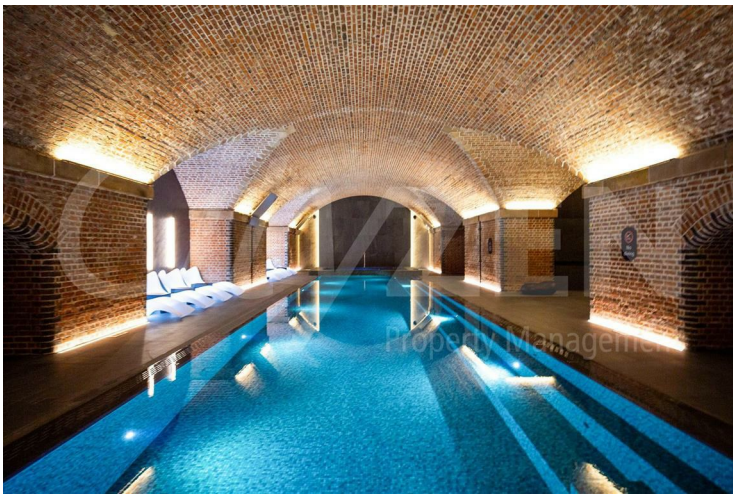
# Viadux, 42 Great Bridgewater Street, Manchester, M1 5LP



THE VIADUX



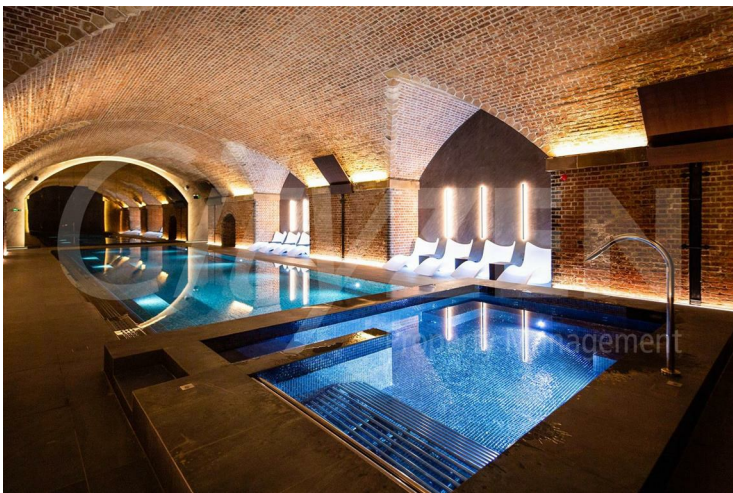
RESIDENTS SPA



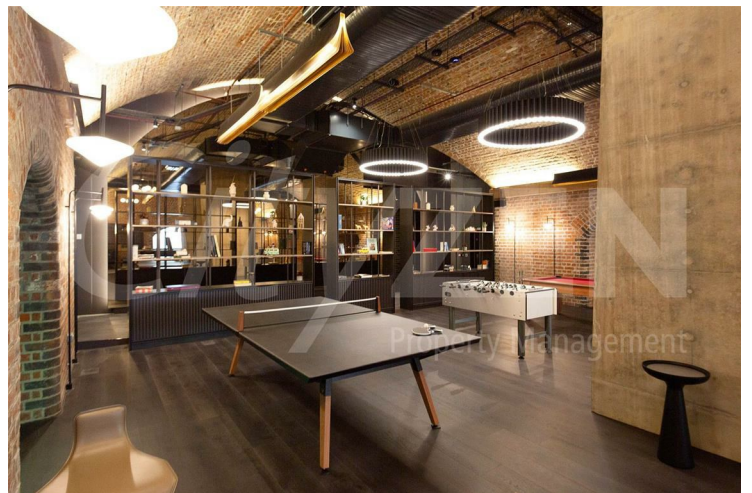
RESIDENTS POOL



RESIDENTS LOUNGE



RESIDENTS POOL

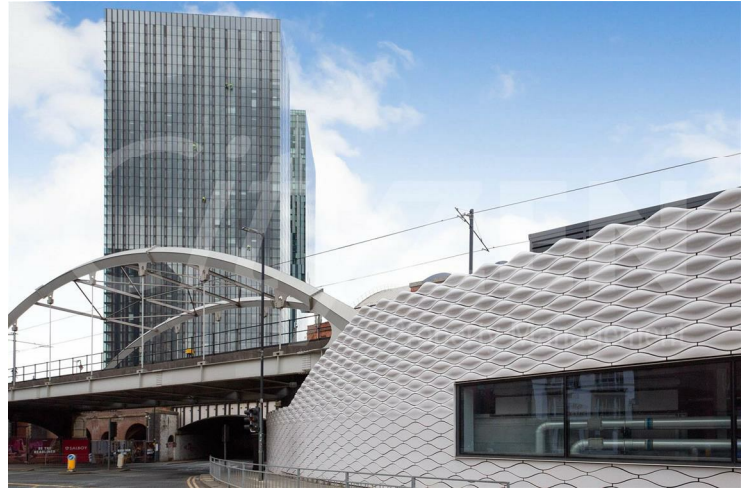


RESIDENTS GAMES ROOM

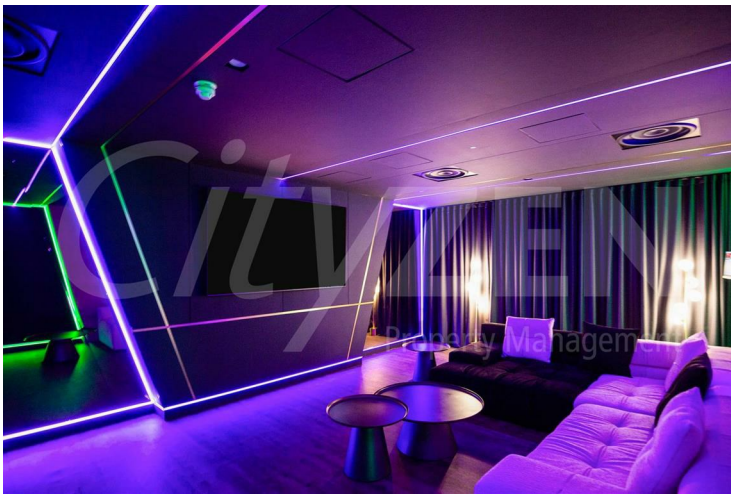
**Viadux, 42 Great Bridgewater Street, Manchester, M1 5LP**



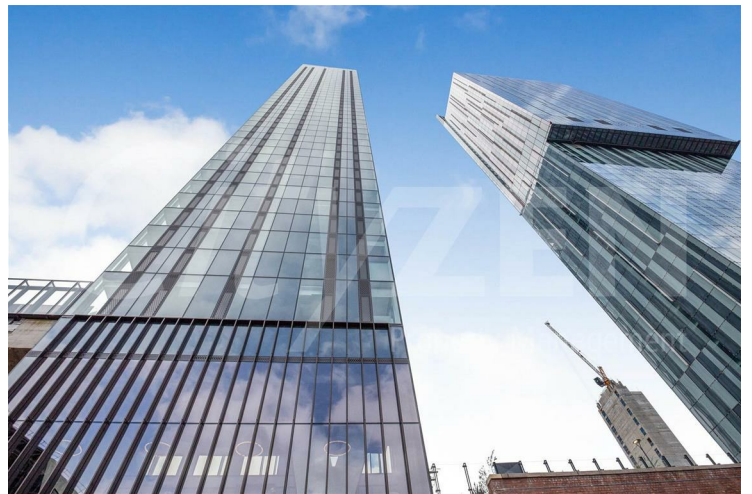
**RESIDENTS SCREENING ROOM**



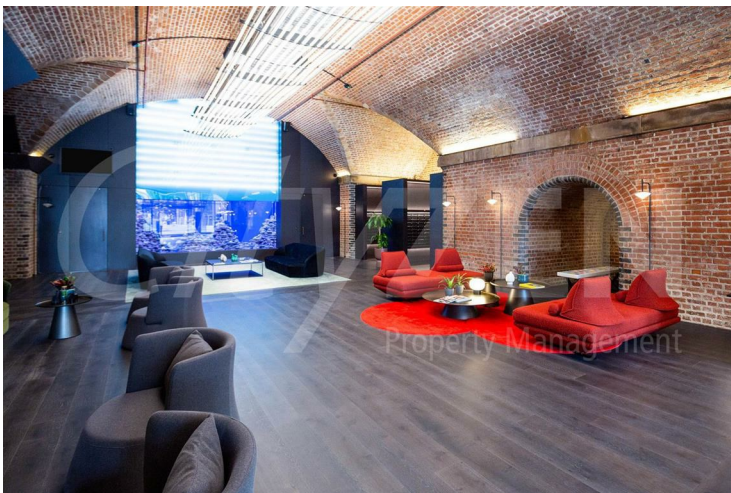
**THE VIADUX**



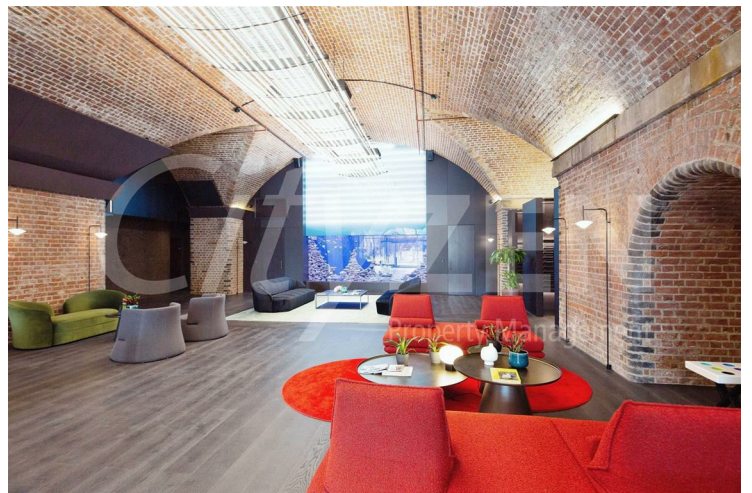
**RESIDENTS BAR/KARAOKE ROOM**



**THE VIADUX**



**RESIDENTS LOUNGE**



**RESIDENTS LOUNGE**

**Viadux, 42 Great Bridgewater Street, Manchester, M1 5LP**



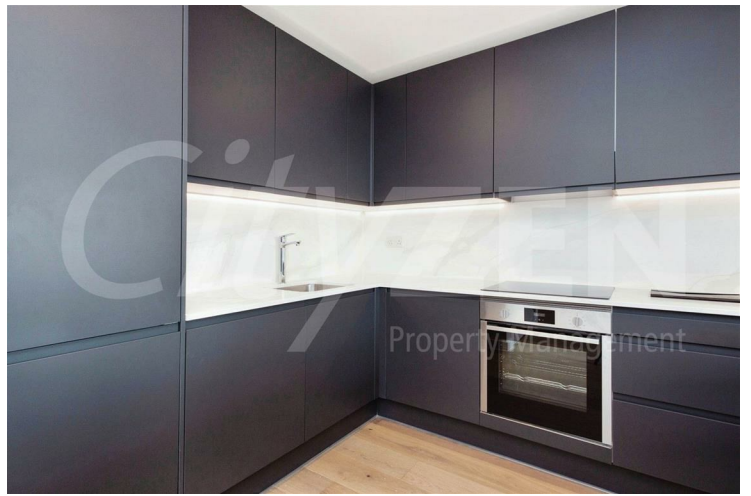
**RESIDENTS POOL**



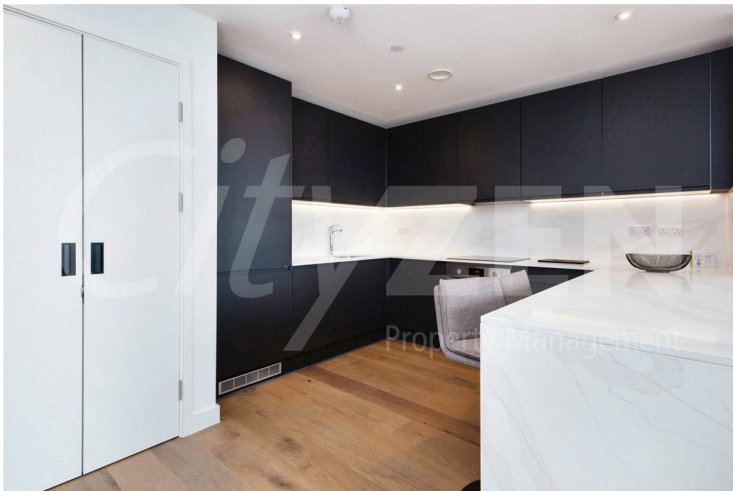
**KITCHEN**



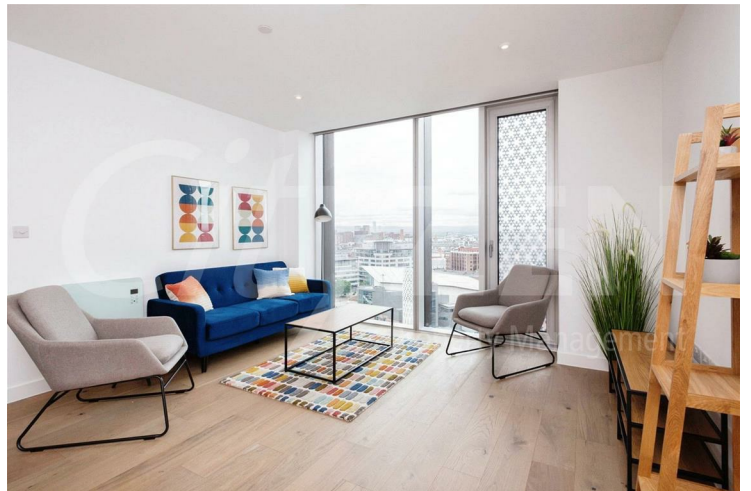
**RECEPTION**



**KITCHEN**

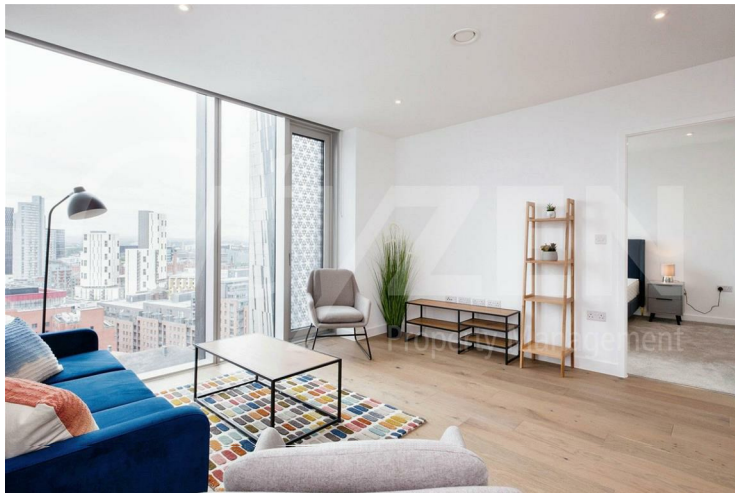


**KITCHEN**

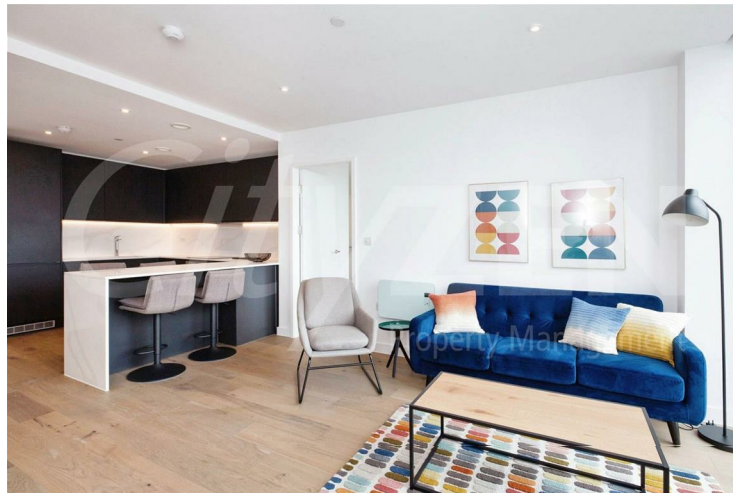


**RECEPTION**

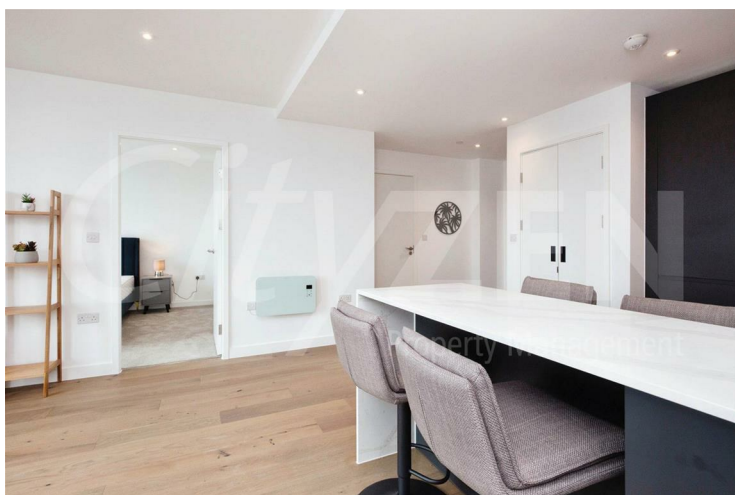
# Viadux, 42 Great Bridgewater Street, Manchester, M1 5LP



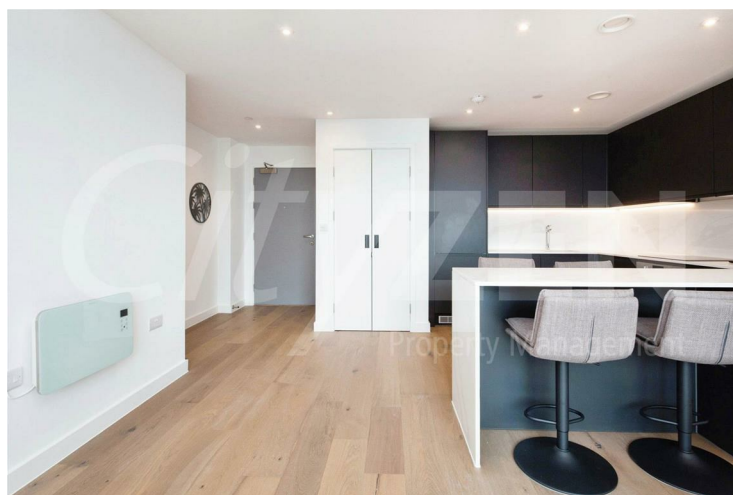
RECEPTION



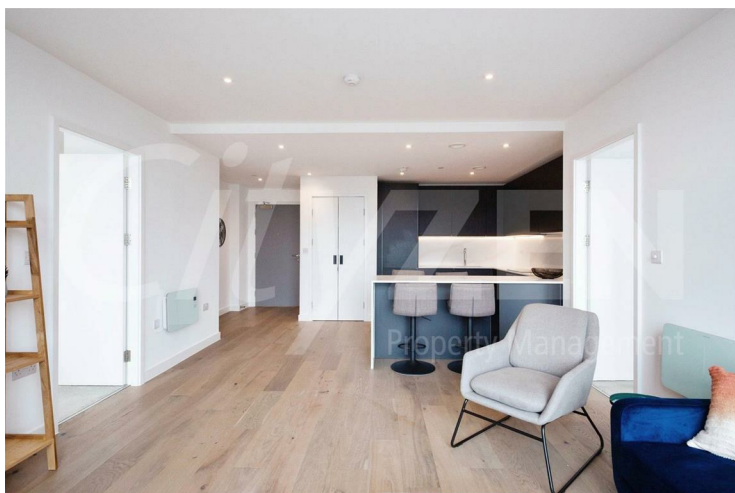
RECEPTION



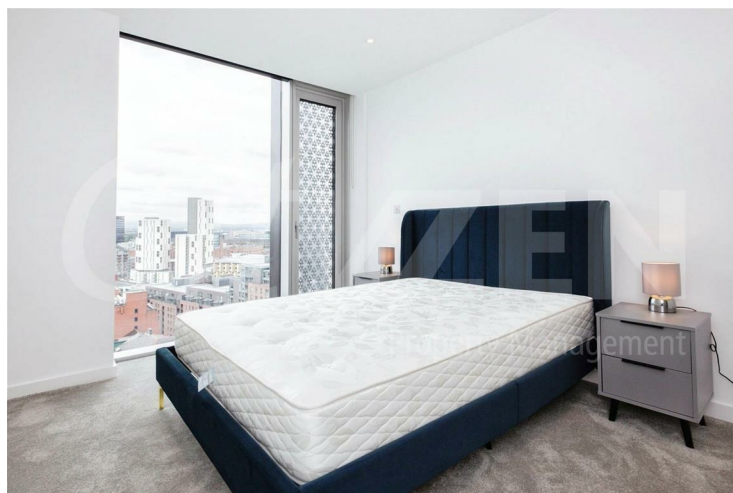
RECEPTION



RECEPTION

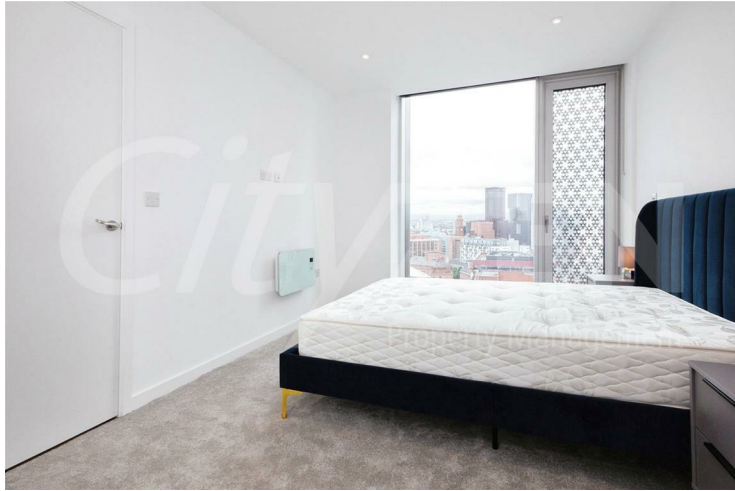


RECEPTION



BEDROOM

**Viadux, 42 Great Bridgewater Street, Manchester, M1 5LP**



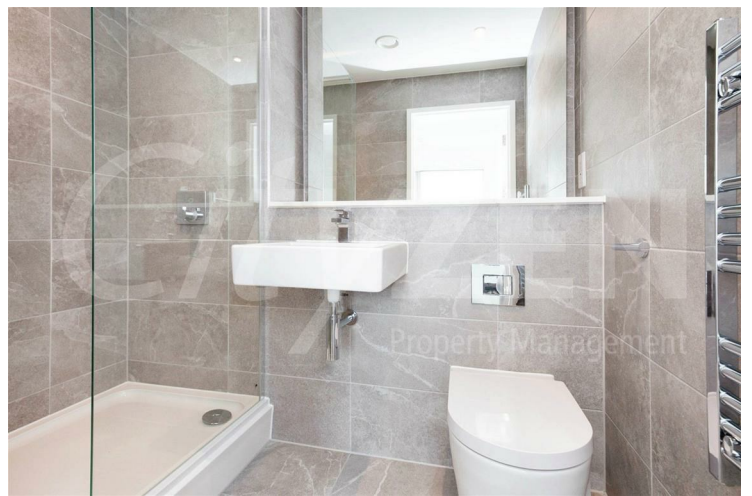
**BEDROOM**



**BEDROOM**



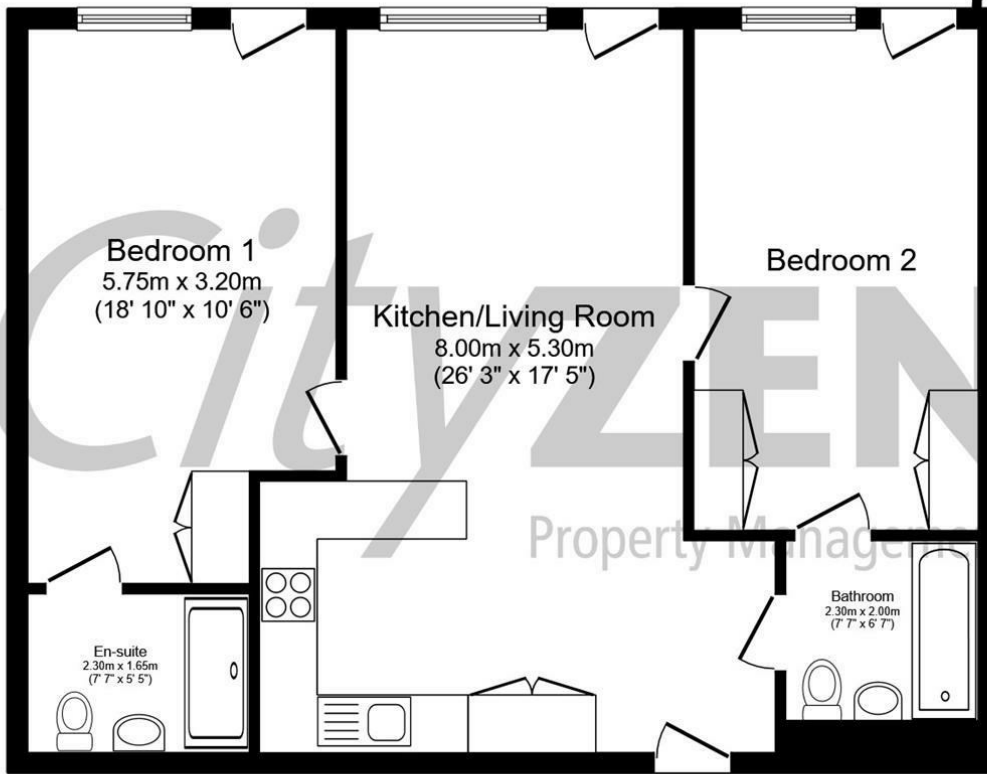
**BATHROOM**



**ENSUITE**

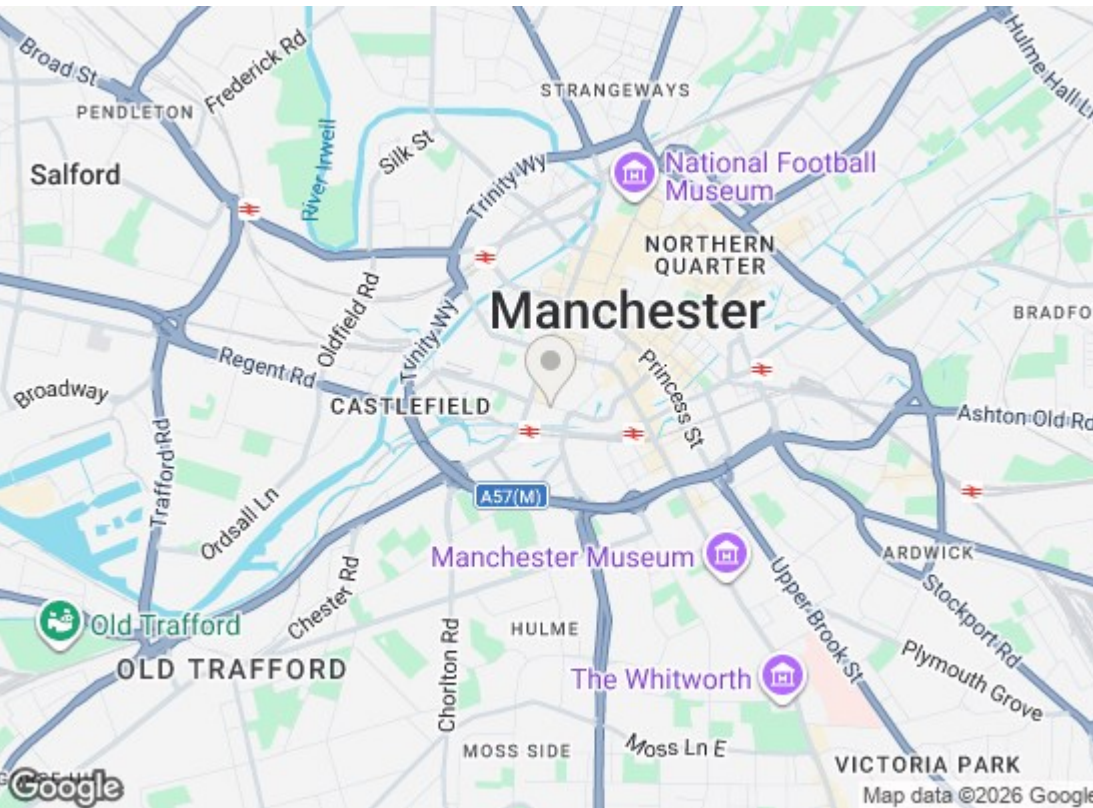


**BEDROOM**



Total floor area 73.9 m<sup>2</sup> (796 sq.ft.) approx

This floor plan is for illustrative purposes only. It is not drawn to scale. Any measurements, floor areas (including any total floor area), openings and orientation are approximate. No details are guaranteed, they cannot be relied upon for any purpose and they do not form part of any agreement. No liability is taken for any error, omission or misstatement. A party must rely upon its own inspection(s). Powered by www.focalagent.com



Energy Efficiency Rating		
	Current	Potential
Very energy efficient - lower running costs		
(92 plus) <b>A</b>		
(81-91) <b>B</b>	<b>85</b>	<b>85</b>
(69-80) <b>C</b>		
(55-68) <b>D</b>		
(39-54) <b>E</b>		
(21-38) <b>F</b>		
(1-20) <b>G</b>		
Not energy efficient - higher running costs		
EU Directive 2002/91/EC		
England & Wales		
Environmental Impact (CO <sub>2</sub> ) Rating		
	Current	Potential
Very environmentally friendly - lower CO <sub>2</sub> emissions		
(92 plus) <b>A</b>		
(81-91) <b>B</b>		
(69-80) <b>C</b>		
(55-68) <b>D</b>		
(39-54) <b>E</b>		
(21-38) <b>F</b>		
(1-20) <b>G</b>		
Not environmentally friendly - higher CO <sub>2</sub> emissions		
EU Directive 2002/91/EC		
England & Wales		

We have prepared these property particulars as a general guide to a broad description of the property. They are not intended to constitute part of an offer or contract. We have not carried out a structural survey and the services, appliances and specific fittings have not been tested. All photographs, measurements, floorplans and distances referred to are given as a guide only and should not be relied upon for the purchase of carpets or any other fixtures or fittings. Lease details, service charges and ground rent (where applicable) and council tax are given as a guide only and should be checked and confirmed by your Solicitor prior to exchange of contracts.